



23 Edinburgh Crescent Woollooware NSW

 2

LOCATION, LOCATION, LOCATION

Offered for the first time in over 55 years and set peacefully amongst quality homes this sentiment filled solid brick single level home will appeal to home owners, investors &/or astute builders alike.

Set in a tightly held and highly sought enclave on a large north facing block of land and boasting a superb lifestyle opportunity within close and convenient proximity to Cronulla's pristine beaches and waterways, the new and vibrant Bay Central Shopping Village, cafes & eateries, schools, golf courses & transport.

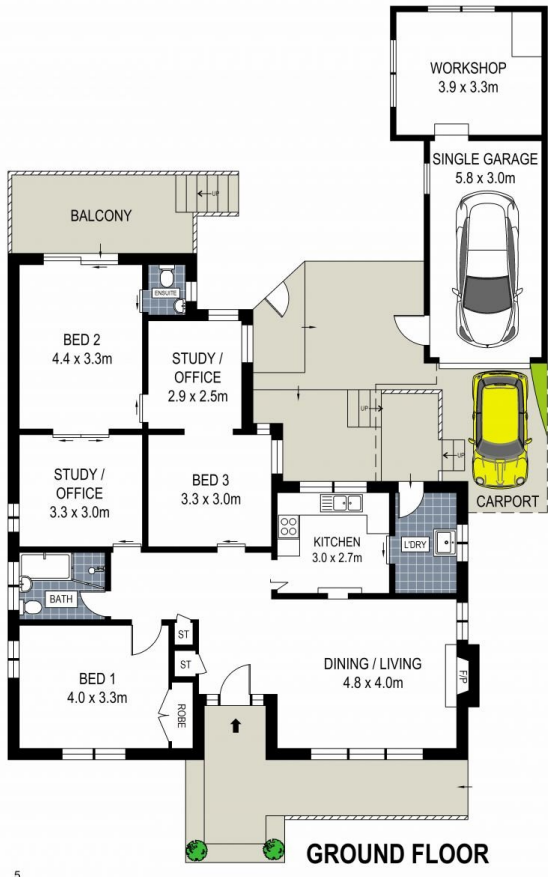
- Endless potential in a highly sought tightly held locale
- Impressive frontage of over 16 metres and site area of over 638 square metres
- Solid brick sentiment filled home with sunny north facing yard
- Choice of formal & informal living areas
- Versatile layout provides scope for endless

AUCTION

Type : Development
Inspect : Saturday, 20th July 2024 12:00 PM - 12:30 PM
Auction : Saturday, 10th August 2024
Land Size : 638 sqm
Zoning : R2 Low Density Residential
View : <https://www.brookes.net.au/sale/nsw/sutherland/woollooware/commercial/development/8066882>

Jon Brookes
 m: 0416 069 169
 o: 9544 5555
 e: jb@brookes.net.au

Brett Ramsey
 m: 0451 922 229
 o: 95468666
 e: brett@brookes.net.au



GROUND FLOOR



SITE PLAN (NOT TO SCALE)



0 1 2 3 4 5 metres

PLANS SHOWN ARE FOR MARKETING PRESENTATION ONLY AND IT'S NOT PART OF ANY LEGAL DOCUMENT. SUBJECT TO ERRORS, INACCURACIES AND IT SHOULD NOT BE USED AS SOLE AND ACCURATE REFERENCE.

23 Edinburgh Crescent, Woolooware

