



18 St George Crescent Sandy Point NSW

 3  2  2

PRIME STREET TO DEEP WATERFRONT HAVEN

Expressions of Interest

Offered for the first time in 46 years, set prominently in the districts most highly sought waterfront enclaves and commanding spectacular panoramic water views over the Georges River from each level this truly unique street to deep waterfront estate has an impressive water frontage of over 24 metres.

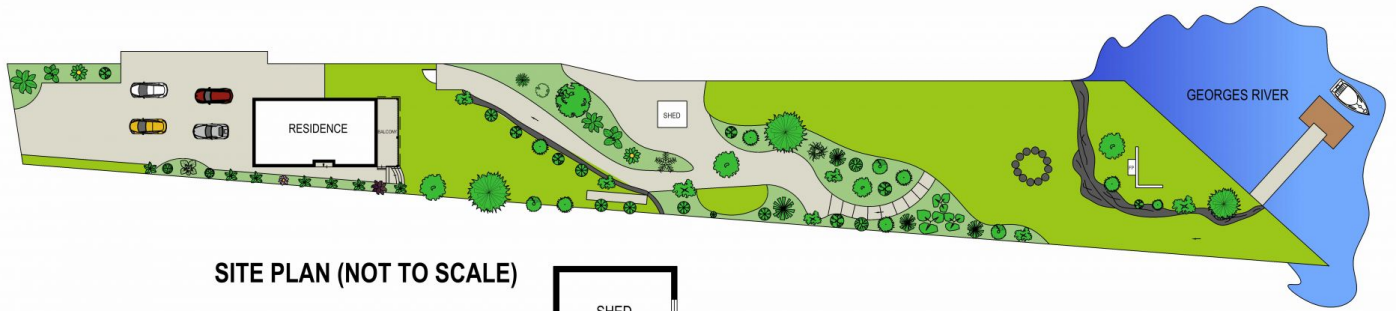
Type : House
Inspect : Saturday, 20th July 2024 01:30 PM - 02:00 PM
Land Size : 1364 sqm
View : <https://www.brookes.net.au/sale/nsw/sutherland/sandy-point/residential/house/7956120>

Providing a rare & exciting unparalleled opportunity with endless potential to the successful purchaser the property boasts over 1,360 square metres of prime street to deep water front land with waterfront improvements including jetty, pontoon, slipway ramp plus own sandy beach ideal for boating, fishing, kayaking and jet skiing enthusiasts.

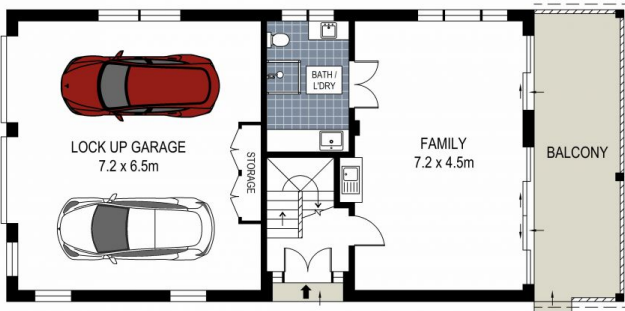
- Prime street to deep water holding
- Spectacular uninterrupted panoramic water, bush and leafy reserve views
- Coveted sun drenched north-east aspect
- Impressive site of over 1,360 square metres and water

Jon Brookes
 m: 0416 069 169
 o: 9544 5555
 e: jb@brookes.net.au

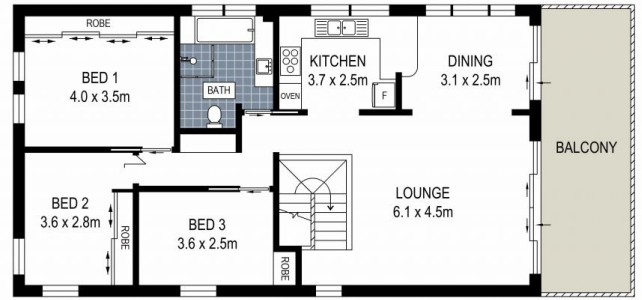
Brett Ramsey
 m: 0451 922 229
 o: 95468666
 e: brett@brookes.net.au



SITE PLAN (NOT TO SCALE)



GROUND FLOOR



FIRST FLOOR

0 1 2 3 4 5 metres



PLANS SHOWN ARE FOR MARKETING PRESENTATION ONLY AND IT'S NOT PART OF ANY LEGAL DOCUMENT. SUBJECT TO ERRORS, INACCURACIES AND IT SHOULD NOT BE USED AS SOLE AND ACCURATE REFERENCE.

18 St George Crescent, Sandy Point

