

6/47 - 67 Mulga Road Oatley NSW

 2  1  1

### Stylish and Spacious Villa

A unique opportunity to lease this stunning full brick two bedroom villa in the Oatley Square boutique complex.

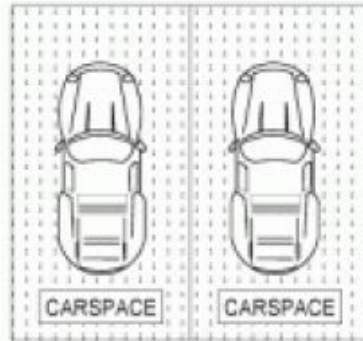
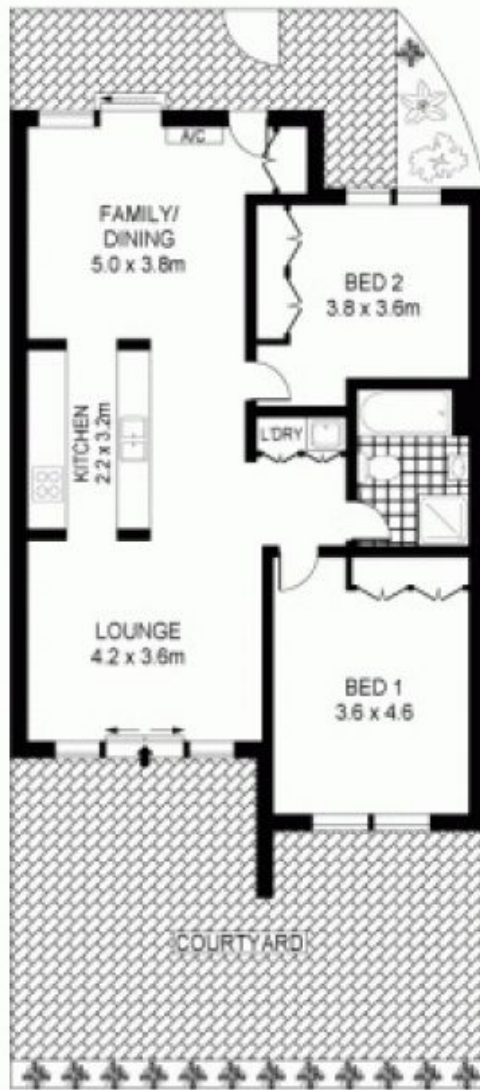
#### Features Include:

- Two good size bedrooms with Built-in
- Modern bathroom with separate shower and bath
- Separate lounge and dining room
- Kitchen with Caesar Stone Bench tops & gas cooking
- Large tiled courtyard with district views
- Polished timber floors throughout
- Internal laundry, Air Con, Security Intercom
- Secure basement parking for two cars with lift access
- Moments to Oatley park, Oatley campus, transport and village shopping.

To arrange an inspection please contact the team at Brookes Partners on 95468666 or 0411 380010

**Type** : Villa  
**Date Available** : Tuesday, 24th July 2018  
**Bond** : 2,360  
**View** : <https://www.brookes.net.au/lease/nsw/st-george/oatley/residential/villa/5757277>

**Jodie Heeks**  
 m: 0413 447 299  
 o: 9546 8666  
 e: [jh@brookes.net.au](mailto:jh@brookes.net.au)



INT : 87m<sup>2</sup>



6/47-65 MULGA ROAD  
OATLEY

**Plan File Disclaimer:** Harcon Images floor plans and the measurements are for visual and marketing purposes only, and cannot be used, in whole or part, as part of any offer or contract. Measurements are not architecturally accurate - errors approximations. These measurements should not be used to determine the value for any property. Harcon Images - www.harconimages.com.au  
Ref: 19102