



## Caringbah

### Ample Size

Versatile factory unit in central location. High clearance with separate office and internal amenities.

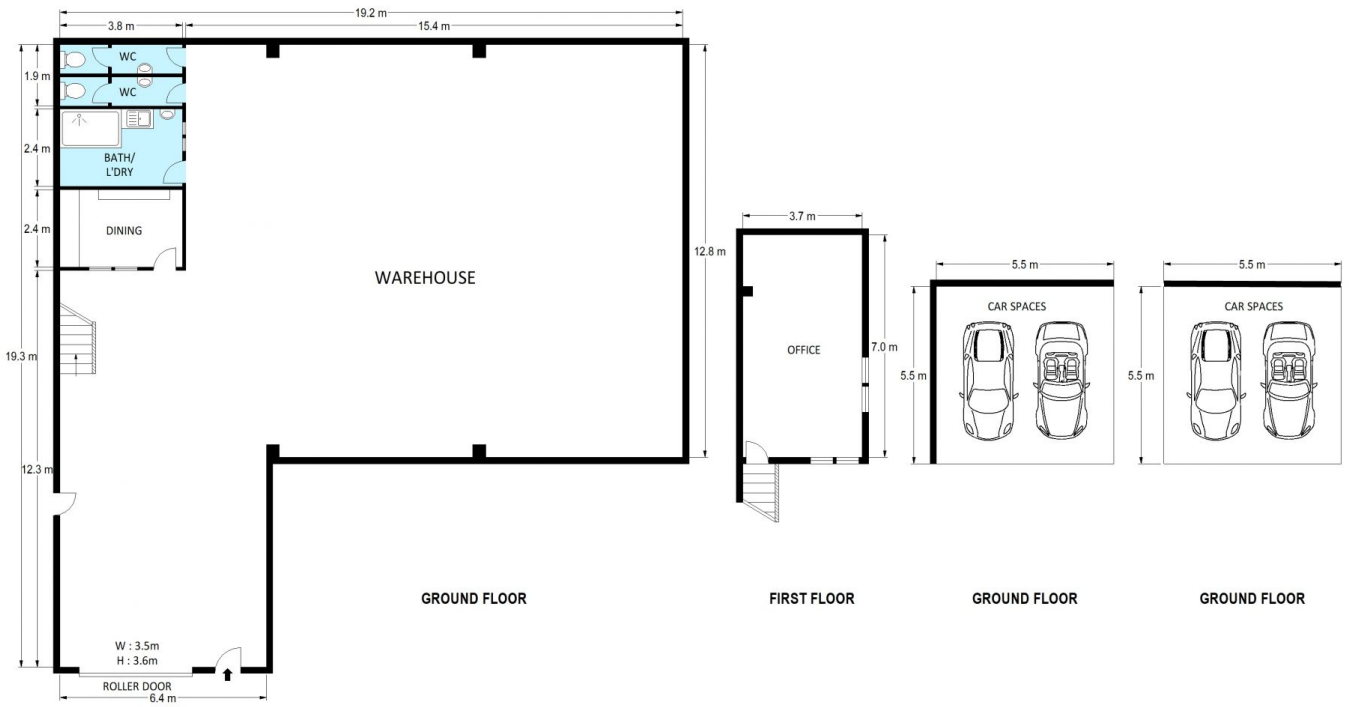
- Separate office space
- High clearance warehouse
- Internal amenities
- Easy access

For further details &/or to arrange an inspection please call the team at Brookes Partners Real Estate on 9546 8666.

**Type** : Industrial  
**Building Size:** 305 sqm  
**View** : <https://www.brookes.net.au/lease/nsw/sutherland/caringbah/commercial/industrial/5757189>

**Jon Brookes**  
m: 0416 069 169  
o: 9544 5555  
e: [jb@brookes.net.au](mailto:jb@brookes.net.au)

**David Halyard**  
m: 0434 742 222  
o: 9546 8666  
e: [davidh@brookes.net.au](mailto:davidh@brookes.net.au)



Address :  
9 / 55 Willarong Road, Caringbah

APPROXIMATE  
GROUND FLOOR : 289 m<sup>2</sup>  
FIRST FLOOR : 27 m<sup>2</sup>  
TOTAL AREA : 316 m<sup>2</sup>

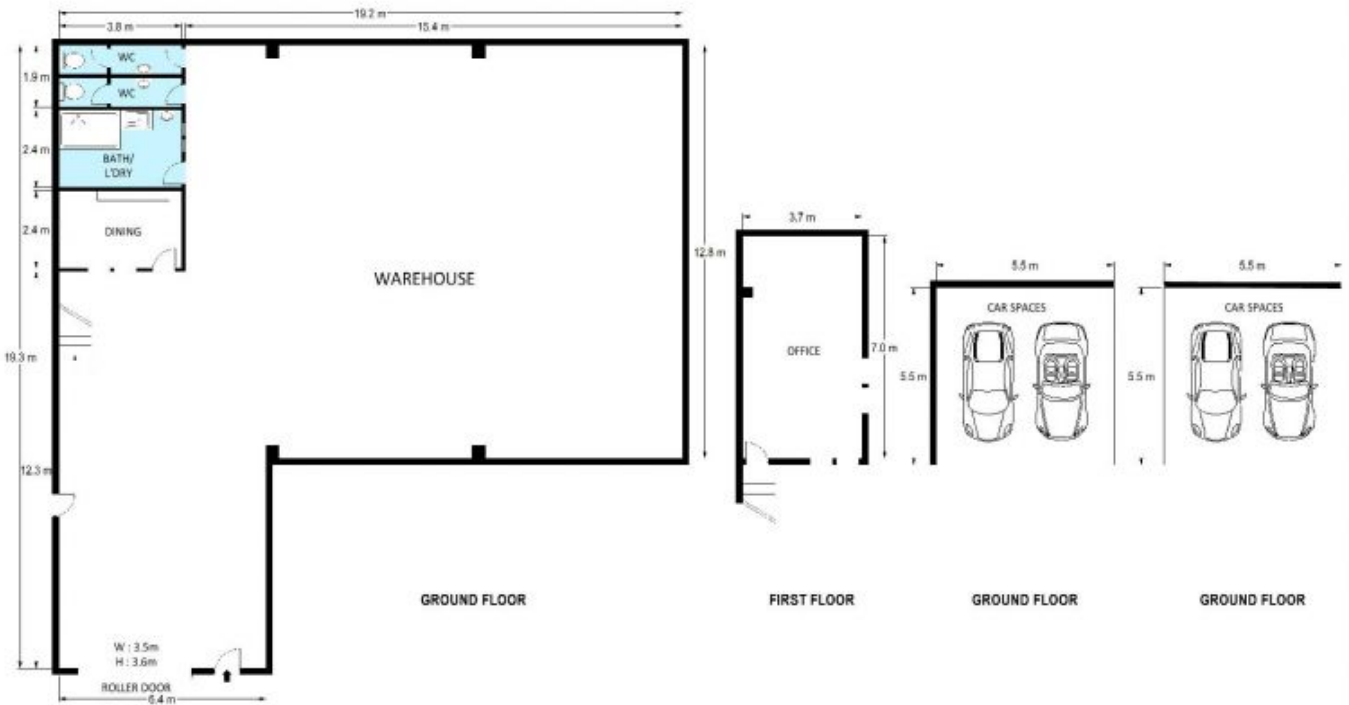


MARKETING DRAWING

Scale : 1 / 150 at A4

Page : 1 / 1

DISCLAIMER :  
Plans shown are for presentation purposes and are not part of any legal document or title and are subject to errors, omissions, inaccuracies and should not be used as sole and accurate reference. Particulars given are for general information only and do not constitute any representation on the part of the vendor or agent. No liability will be accepted.



Address :  
9 / 55 Willarong Road, Caringbah

APPROXIMATE  
GROUND FLOOR : 289 m<sup>2</sup>  
FIRST FLOOR : 27 m<sup>2</sup>  
TOTAL AREA : 316 m<sup>2</sup>



MARKETING DRAWING

Scale : 1 / 150 at A4

Page : 1 / 1

DISCLAIMER :  
Plans shown are for presentation purposes and are not part of any legal document or title and are subject to errors, omissions, inaccuracies and should not be used as sole and accurate reference. Particulars given are for general information only and do not constitute any representation on the part of the vendor or agent. No liability will be accepted.

