



11/9 Clubb Crescent Miranda NSW

 2  2  1

TERRACE STYLE APARTMENT OVER 210SQM WITH CITY & BAY VIEWS

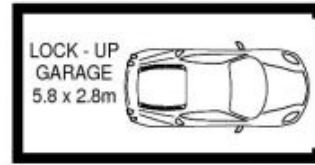
Set prominently on the top floor and boasting the coveted north-easterly aspect this spacious and private terrace style apartment is truly unique offering distant water and city views.

Featuring only one common wall and fusing a selection of living, dining and entertaining options the property is conveniently located only a short stroll to Westfield shopping centre, Miranda train station and all other local conveniences.

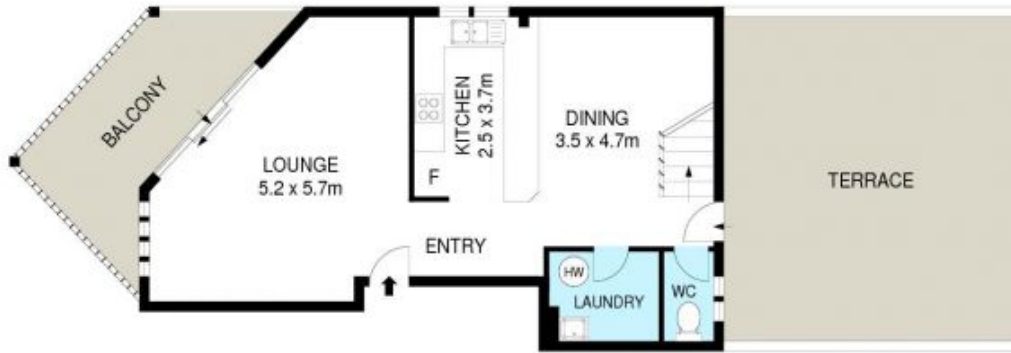
- An astonishing 214sqm of superb living and outdoor terraces
- Choice of various lounge, dining and entertaining areas
- Private setting with impressive outlook and views
- Abundance of natural light, only one common wall
- Large kitchen with quality stainless steel appliances
- Complete main bathroom plus second toilet

Type : Unit
Date Available : Thursday, 24th April 2014
View : <https://www.brookes.net.au/lease/nsw/sutherland/miranda/residential/unit/5756186>

Brookes Partners
 m:
 o: 9546 8666
 e: sales@brookes.net.au



BASEMENT



0 1 2 3 4 5 meters

Plans shown are for marketing presentation purposes and are not part of any legal document. Subject to errors, inaccuracies and it should not be used as sole and accurate reference.



11/9-13 CLUBB CRESCENT, MIRANDA