



57 Dolans Road Woollooware NSW

 5  3  2

HOME OF GRAND PROPORTIONS

Situated in one of Woollooware South's best locations this meticulously maintained solid double brick home is architecturally designed for family living at its best.

Set on a huge block (approx) 746sqm of level land this much loved home offers a superb environment for family living.

Minutes to local amenities, popular cafes, schools and pristine bays this home offers an exciting opportunity to secure a generous sized family home in a highly desirable location.

- Dual levels provide four generous bedrooms all with built in robes plus 5th bedroom or study
- Master complete with en-suite and large walk in robe
- An abundance of natural light throughout
- Modern timber kitchen complete with stainless steel appliances and granite bench-tops

Type : House

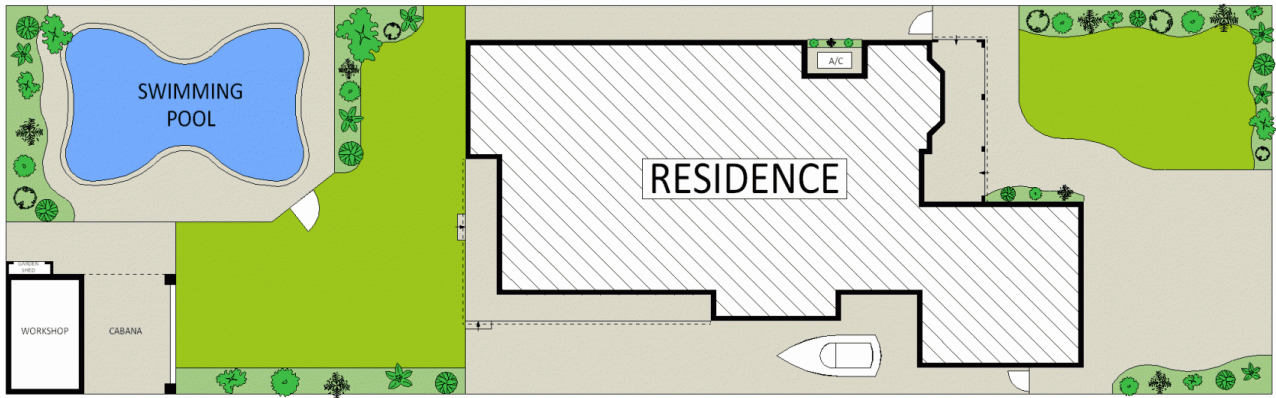
View : <https://www.brookes.net.au/sale/nsw/sutherland/woollooware/residential/house/5756135>

Brookes Partners

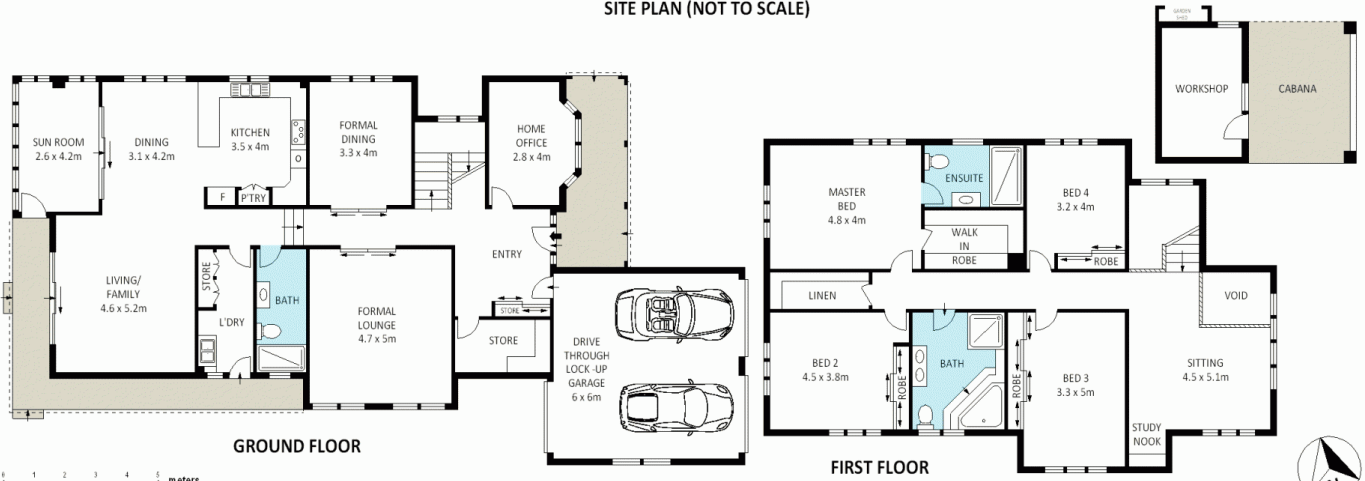
m:

o: 9546 8666

e: sales@brookes.net.au



SITE PLAN (NOT TO SCALE)



GROUND FLOOR

FIRST FLOOR

0 1 2 3 4 5 meters

Plans shown are for marketing presentation purposes and are not part of any legal document. Subject to errors, inaccuracies and it should not be used as sole and accurate reference.



57 DOLANS ROAD, WOOLLOOWARE