



50 Gibson Avenue Padstow NSW



20

INVESTMENT TO BANK ON!

First class industrial facility housing very successful tenant on long term lease.

Set on 2,712 square metres (approx) of industrial 4 (b) land on a level site and within close proximity to many arterial roads including the M5 Motorway. Investors be ready!

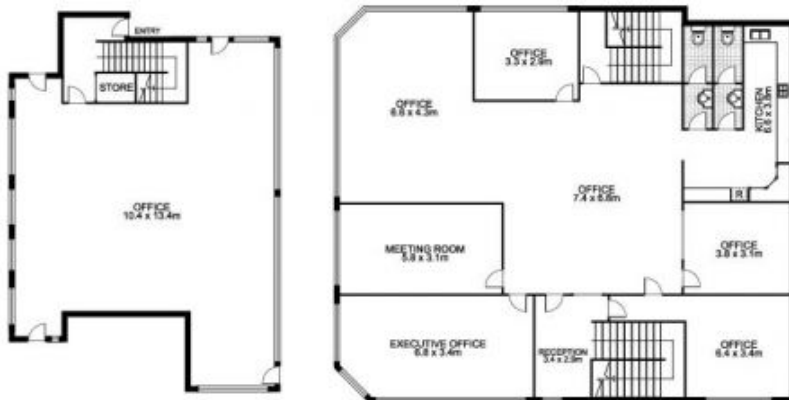
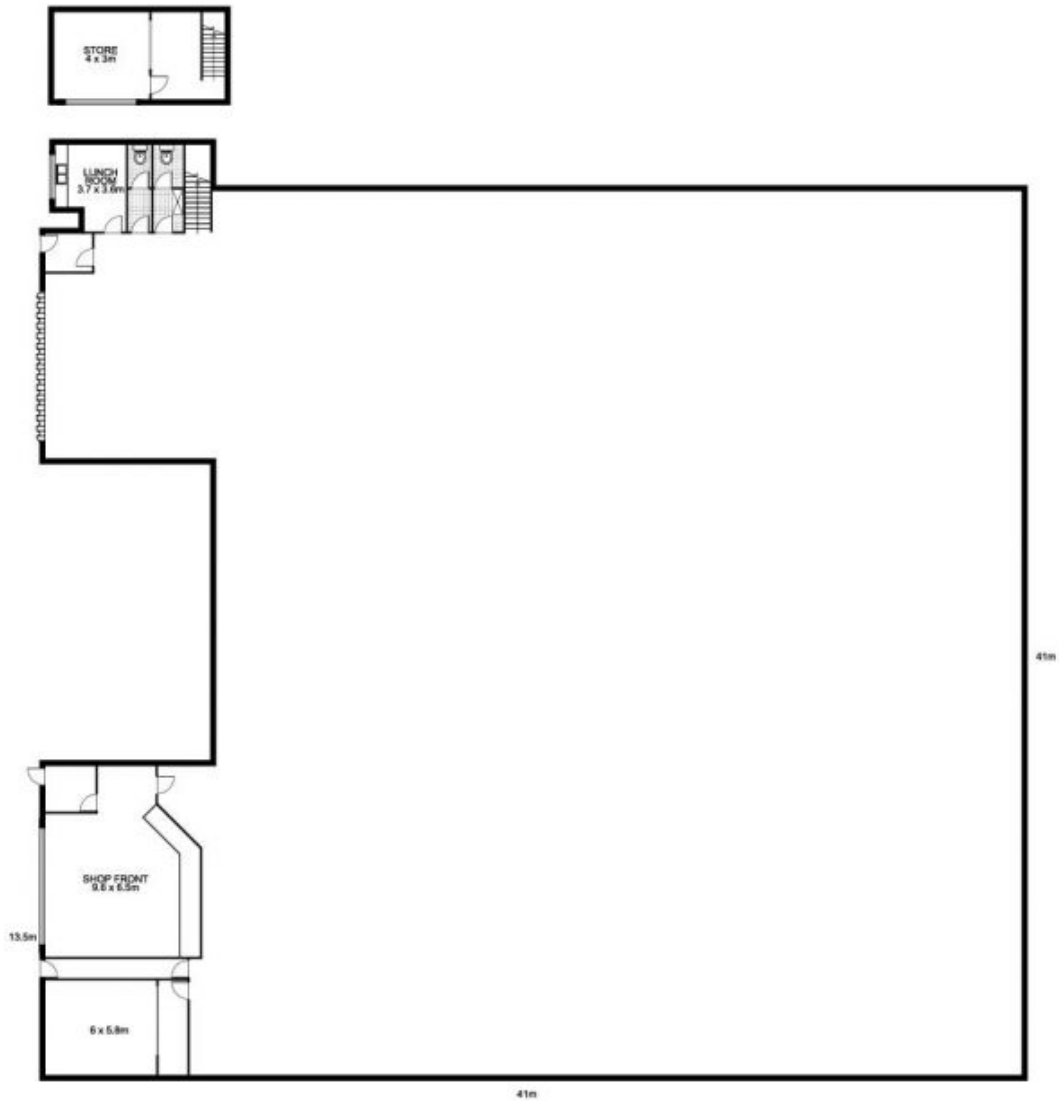
- Brand new 5 year lease with 5 year option
- Leased to Express Industrial Supplies
- 6 month bank guarantee
- Lease to commence on settlement of sale of contract
- Total building area 1,984 square metres (approx)
- Warehouse 1,554 square metres (approx)
- Top floor office & storage 278 square metres (approx)
- Ground floor office 152 square metres (approx)
- Two roller shutter doors leading to high clearance warehouse
- Ground floor & first floor office are air conditioned

Type : Industrial
Building Size: 1984 sqm
Land Size : 2712 sqm
View : <https://www.brookes.net.au/sale/nsw/canterburybankstown/padstow/commercial/industrial/5755849>

Brookes Partners

m:
o: 9546 8666
e: sales@brookes.net.au

50 Gibson Avenue, PADSTOW



Plans by
surroundpix
 .com.au
 1300 30 32 40

This floor plan is intended as a guide only. Layout dimensions are approximate only. No representation or warranties of any nature whatsoever are given or intended. Any person using this information should rely on their own enquiries.