



43 Yarra Burra Street Gymea Bay NSW

 5  2  2

SPACIOUS FAMILY HOME WITH OUTSTANDING POTENTIAL

Peacefully located deep in the heart of Gymea Bay this architecturally designed double brick family home of grand proportions, offers a comfortable lifestyle for the growing family to move in now and enjoy the summer with the potential to update and add real value. Positioned on approx 1518sqm block the home features tranquil westerly bush valley views over Grays Point, in addition to generous multiple living areas and unique designer 'resort style' saltwater pool, complete with swim jets and secluded heated spa you'll enjoy entertaining those long hot summer days away with magical sunsets.

Set over two levels the home boasts 5 bedrooms with built in wardrobes, master bedroom features parents retreat with separate office/study, large ensuite with spa bath and oversized walk-in robe dressing room, sunny balcony with spectacular valley views capturing truly magical sunsets, Spacious open plan living areas all lead into the

Type : House

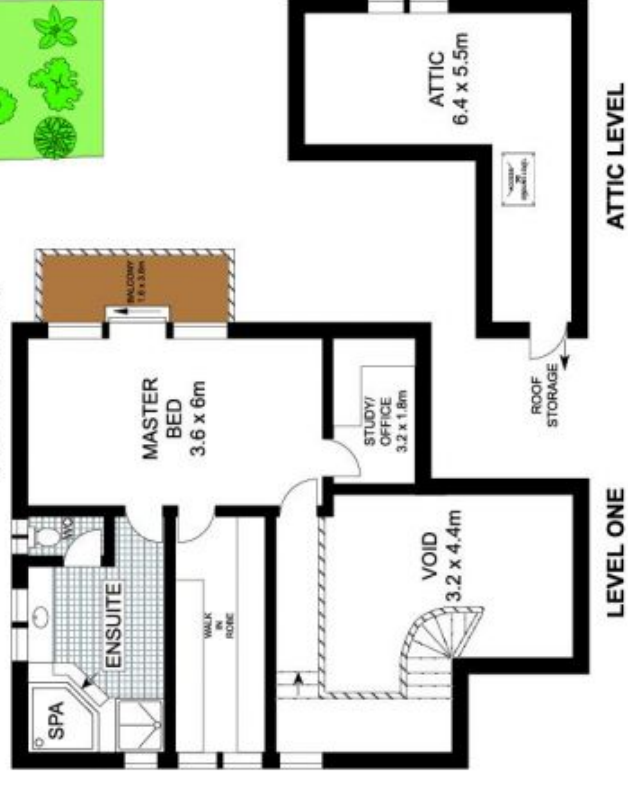
View : <https://www.brookes.net.au/sale/nsw/sutherland/gymea-bay/residential/house/5755791>

Brookes Partners

m:

o: 9546 8666

e: sales@brookes.net.au



0 1 2 3 4 5
Scale in metres. Indicated only. Dimensions are approximate.

43 Yarra Burra Street, Gymea Bay