



Caringbah



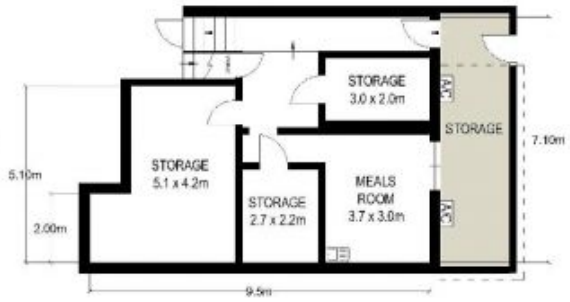
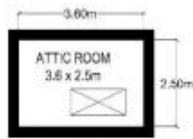
PRIME RETAIL SPACE

Positioned in Caringbah's most highly sought commercial enclaves, this freestanding retail building is situated diagonally opposite the Railway Station, amidst all of the major banks, the TAB and Gloria Jeans Cafe and offers maximum exposure to both pedestrian and vehicular passing trade.

- Clearspan retail area
- Wide main road frontage
- Air conditioned throughout
- Flexible commercial zoning - will suit many uses
- Rear lane access
- Rare opportunity to secure Caringbah's finest retail positions.

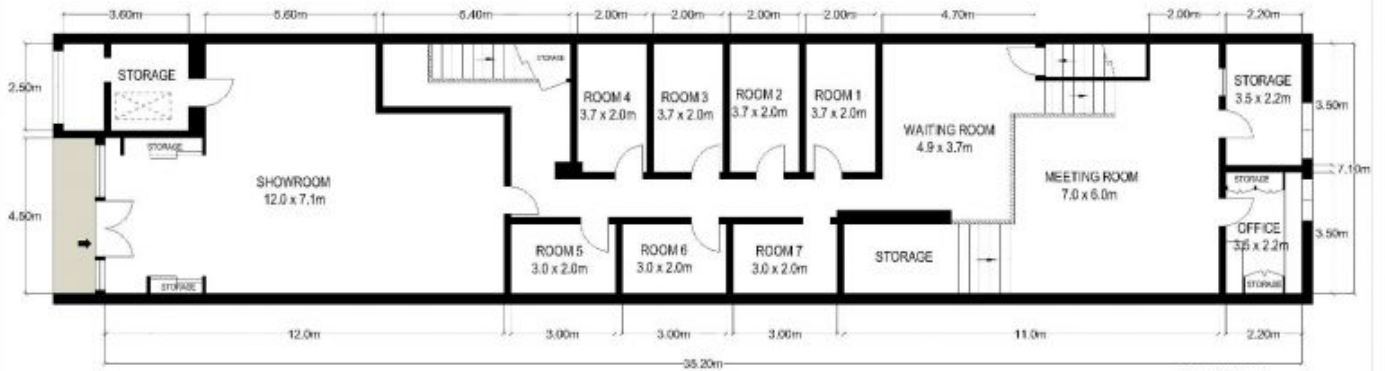
Type : Retail
Building Size: 357 sqm
View : <https://www.brookes.net.au/lease/nsw/sutherland/caringbah/commercial/retail/5755123>

Jon Brookes
 m: 0416 069 169
 o: 9544 5555
 e: jb@brookes.net.au



FIRST FLOOR

LOWER GROUND FLOOR



322 Kingsway, Caringbah

GROUND FLOOR

APPROXIMATE
INTERNAL : 360.65 m²



MARKETING DRAWING

SCALE 1 : 140 on A4
PAGE 1 / 1

DISCLAIMER:
Plans Shown are for presentation purposes and are not part of any legal document or title, and subject to errors, inaccuracies and should not be used as sole and accurate reference. Particulars given are for general information only and do not constitute any representation of the vendor or the agent. No liability will be accepted.

